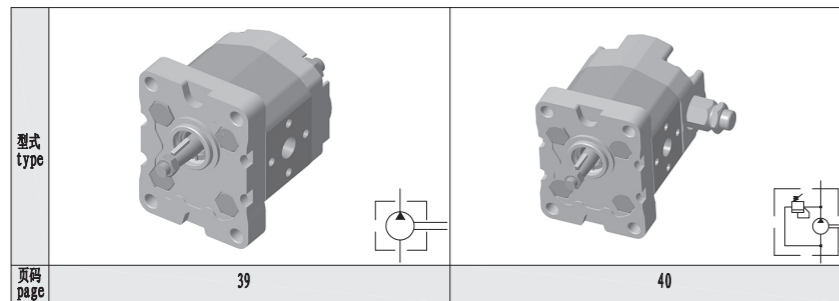
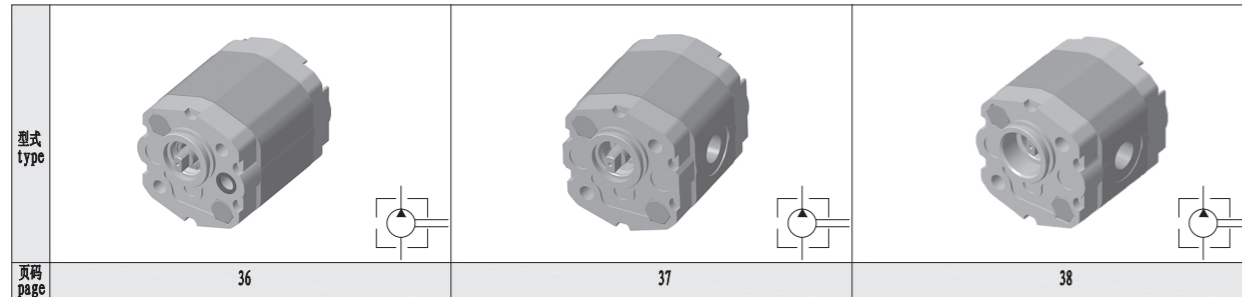


1系列/Group 1

1系列标准型产品概览/Group 1 Standard Product Overview

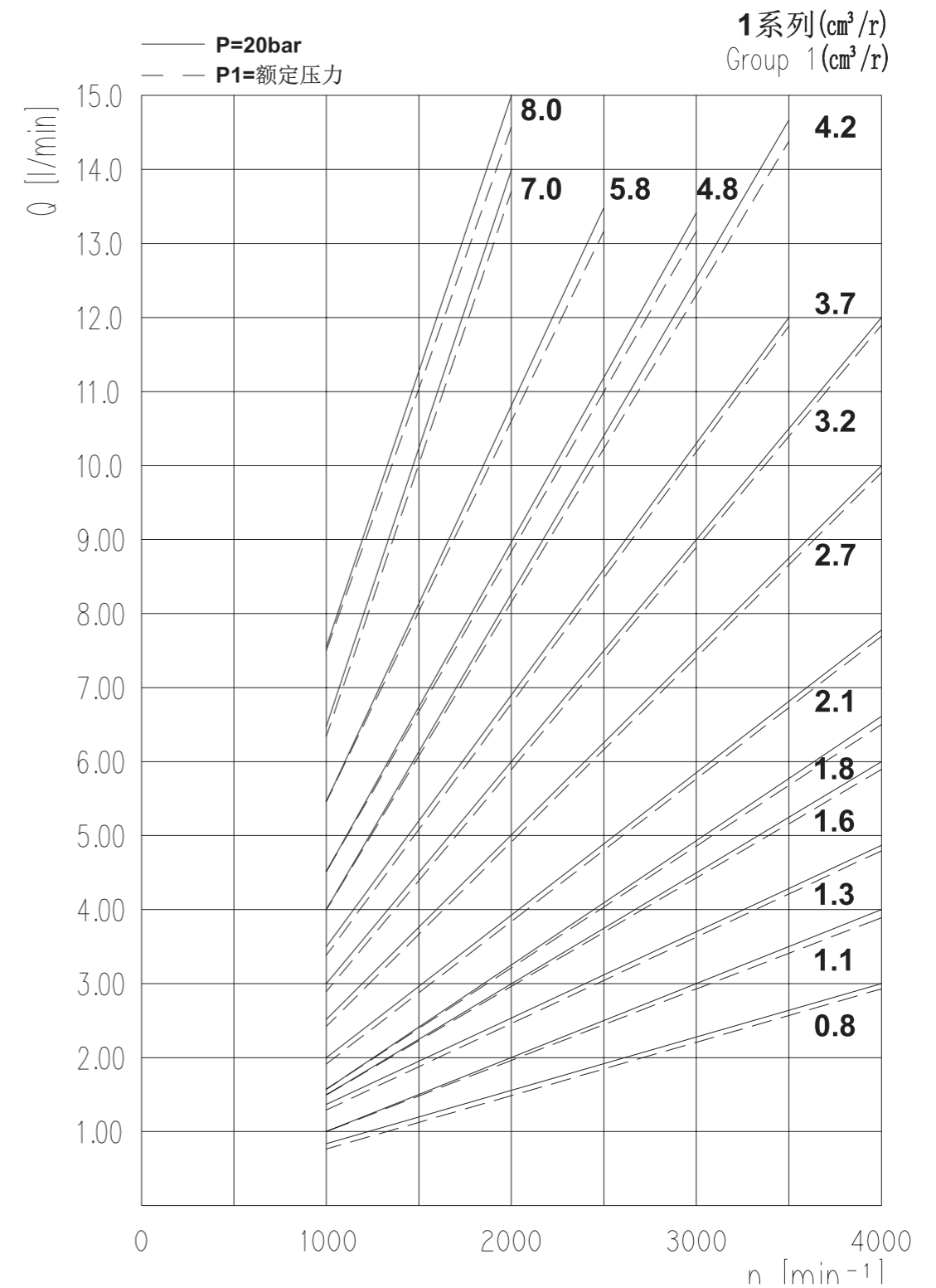


1系列排量参数表/Group 1 Displacement parameter table

排量 Displacement	V	cm ³ /rev	0.8	1.1	1.3	1.6	1.8	2.1	2.7	3.2	3.7	4.2	4.8	5.8	7.0	8.0			
吸油绝对压力 Suction absolute pressure	Pe		0.7...3																
最高连续压力 Max. continuous pressure	P1	bar	230				210			190		160							
最高间隙压力 Max. intermittent pressure	P2		250				230			210		180							
最高峰值压力 Max. peak pressure	P3		270				250			230		200							
最低转速 Min. speed	n _{Min}	r/min	1000						800				600						
最高转速 Max. speed	n _{Max}		6000						5000		4500		3500		3000		2500		2100
容积效率 Volumetric efficiency	η _v	%	≥90		≥91				≥92				≥93						

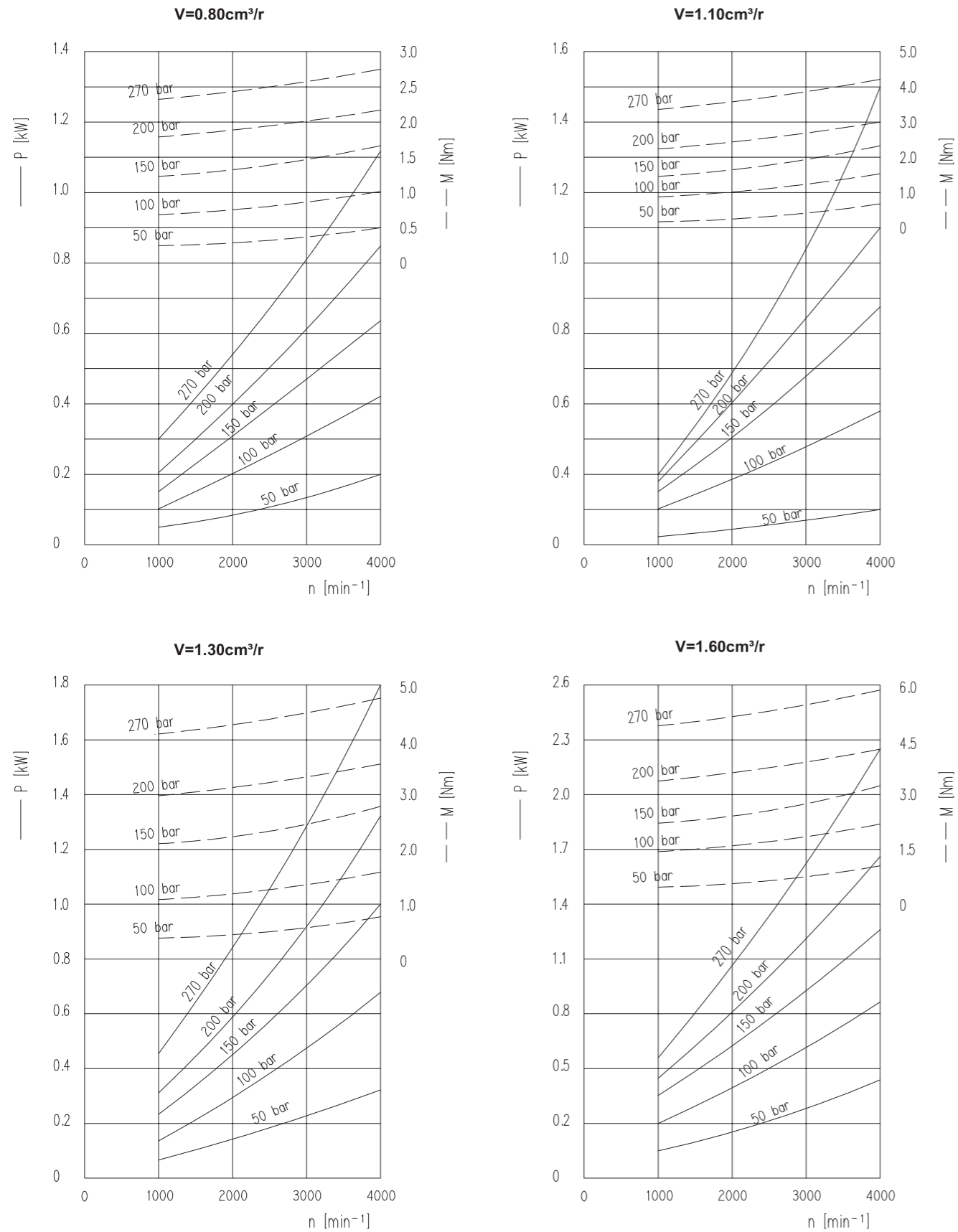
1系列/Group 1

1系列流量性能曲线表/Group 1 Flow Performance Curve Table



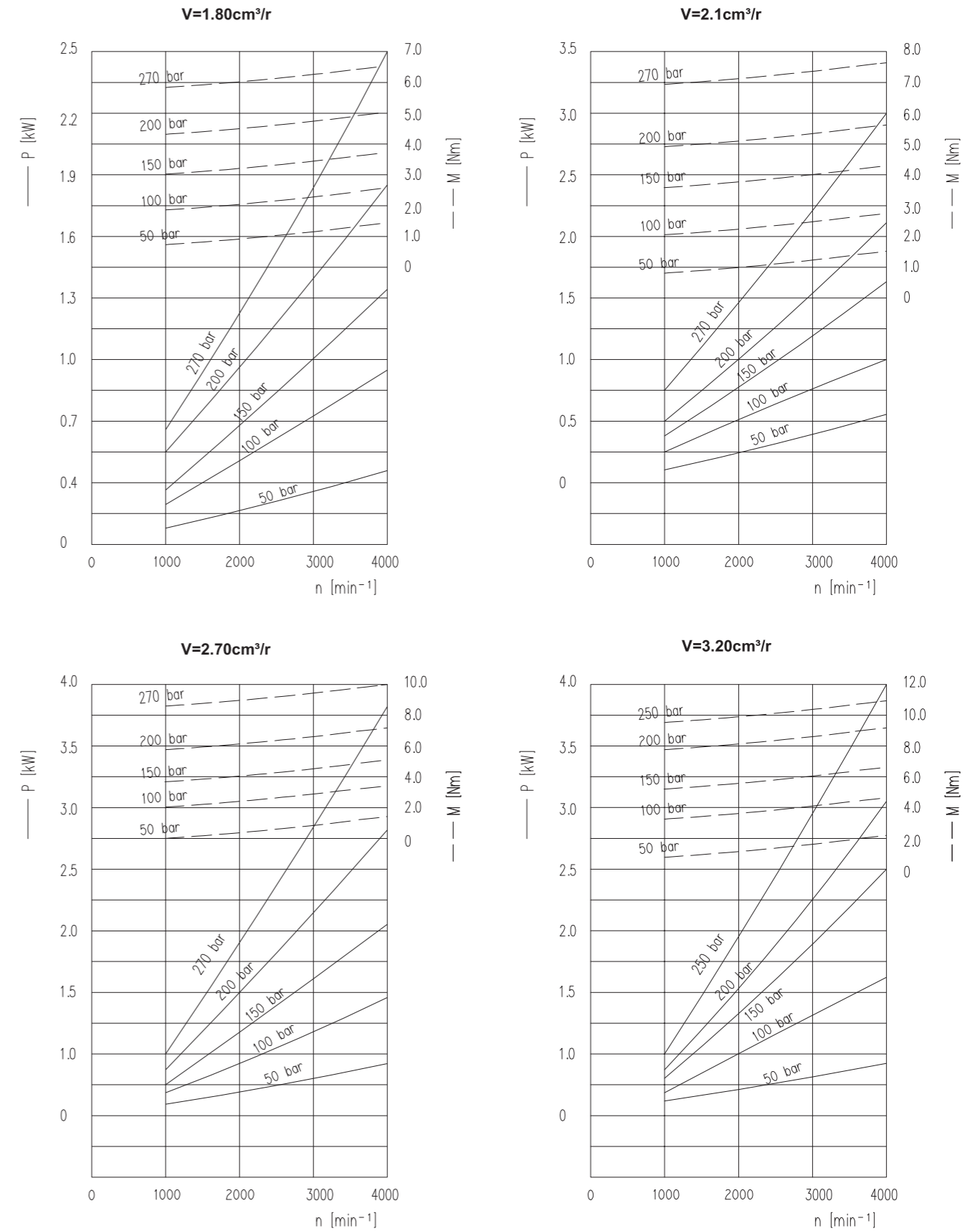
1系列/Group 1

1系列功率性能曲线表/Group 1 Power Performance Curve Table



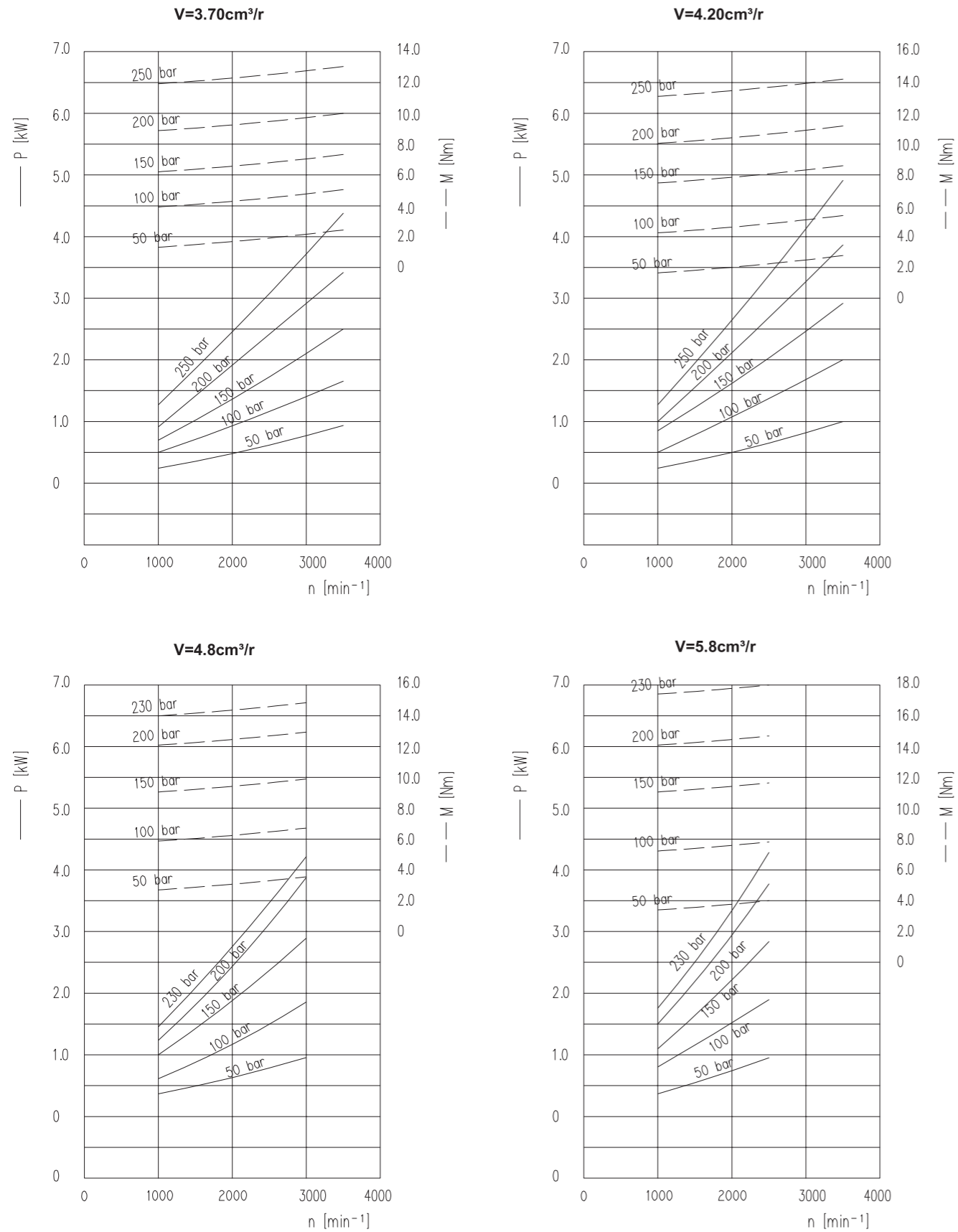
1系列/Group 1

1系列功率性能曲线表/Group 1 Power Performance Curve Table



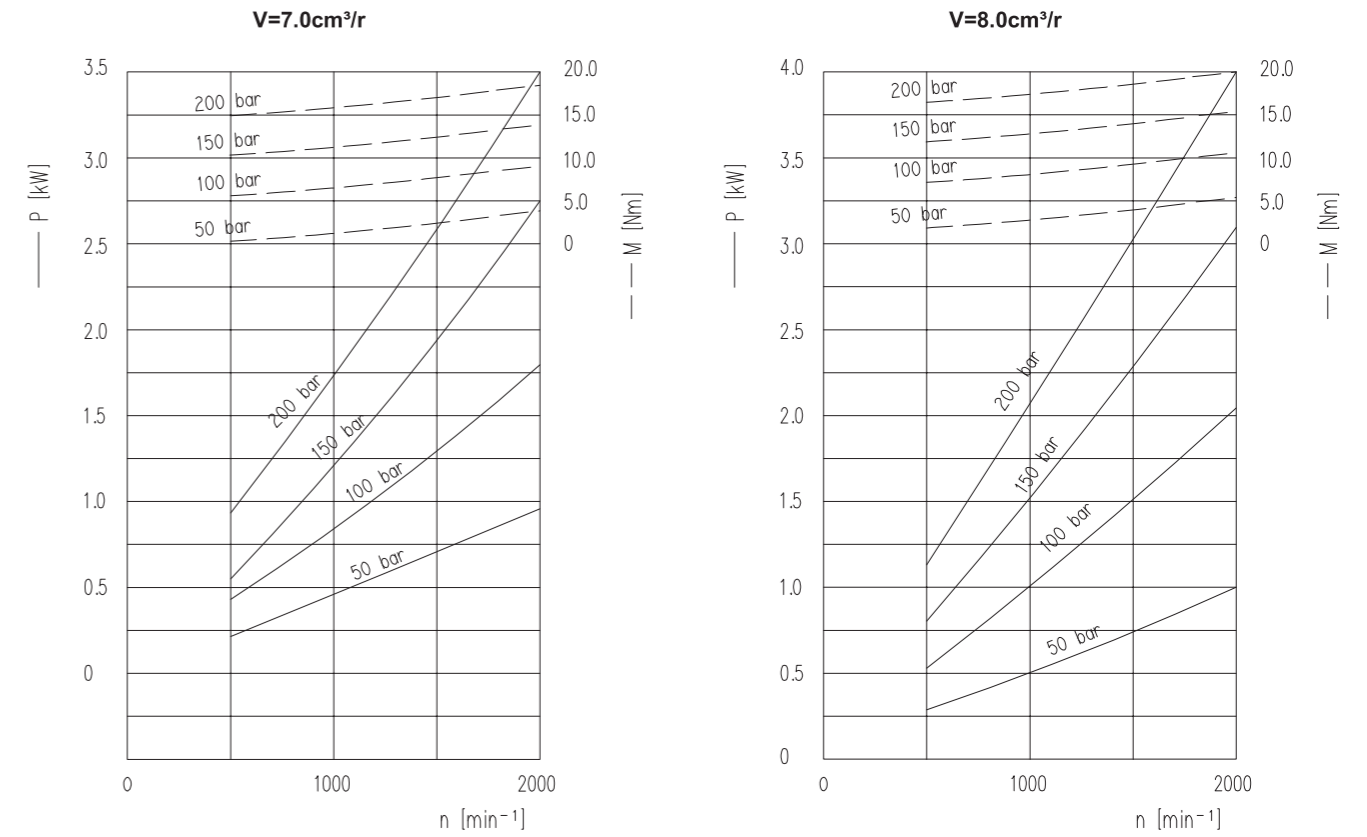
1系列/Group 1

1系列功率性能曲线表/Group 1 Power Performance Curve Table



1系列/Group 1

1系列功率性能曲线表/Group 1 Power Performance Curve Table



1系列/Group 1

1系列噪音曲线表/Group 1 Noise Curve Table

噪音曲线

噪音等级取决于转速和压力范围；这个压力范围介于10 bar和压力值 P1之间。

The noise level depends on the speed and pressure range; This pressure range is between 10 bar and pressure value P1.

油液数据: $v = 32 \text{ mm}^2/\text{s}$, $\theta = 50^\circ\text{C}$.

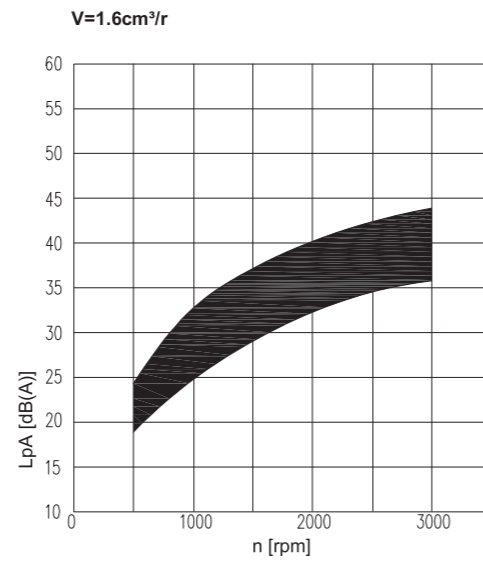
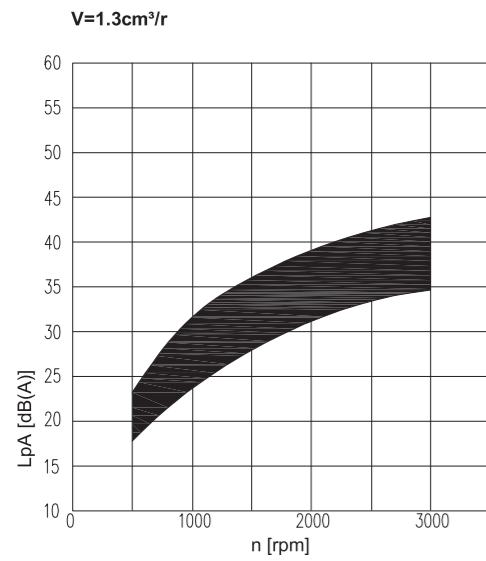
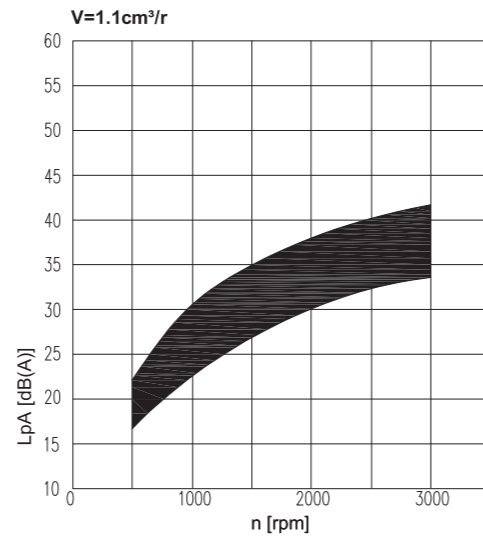
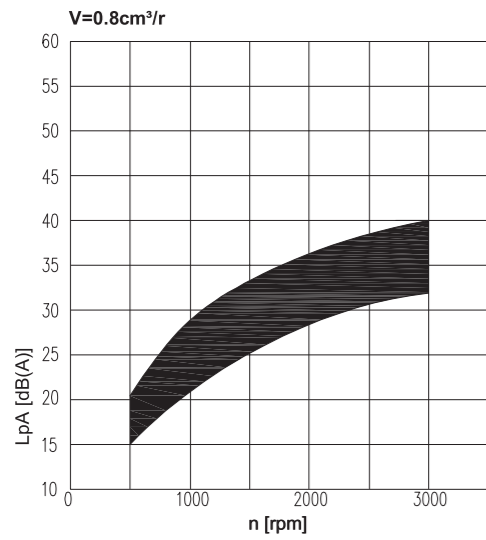
Oil data: $V = 32 \text{ mm}^2/\text{s}$, $\theta = 50^\circ\text{C}$.

对于从吸声测量室测得的噪音值进行计算而得到的声音压力等级，符合 DIN 45635 第 26 章的要求。

The sound pressure level obtained by calculating the noise value measured from the sound absorption measuring room meets the requirements of Chapter 26 of DIN 45635.

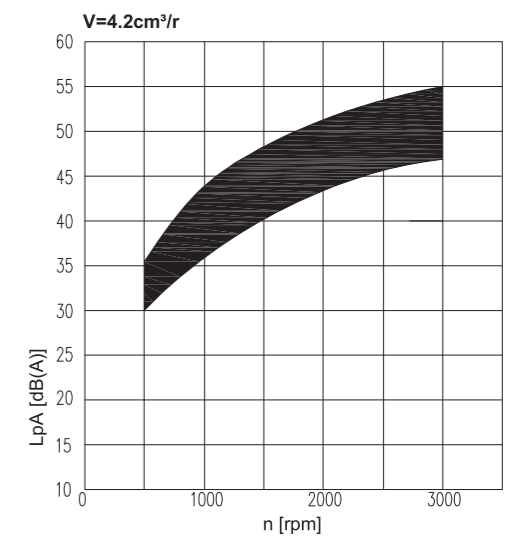
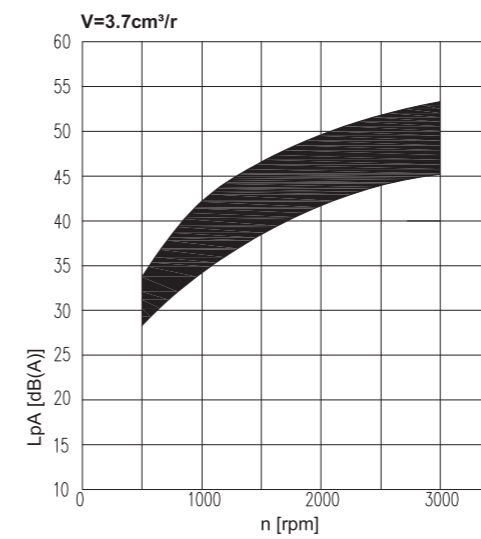
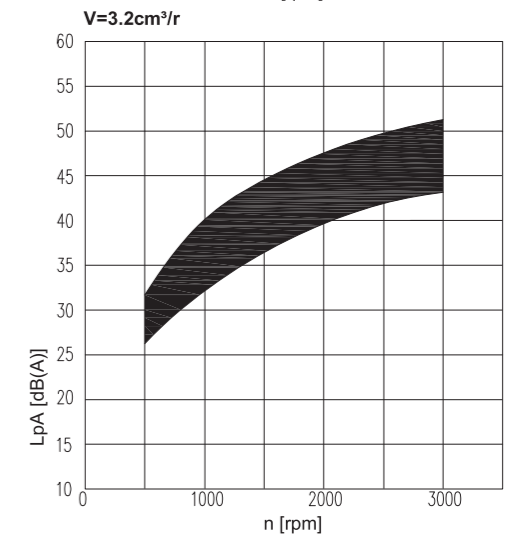
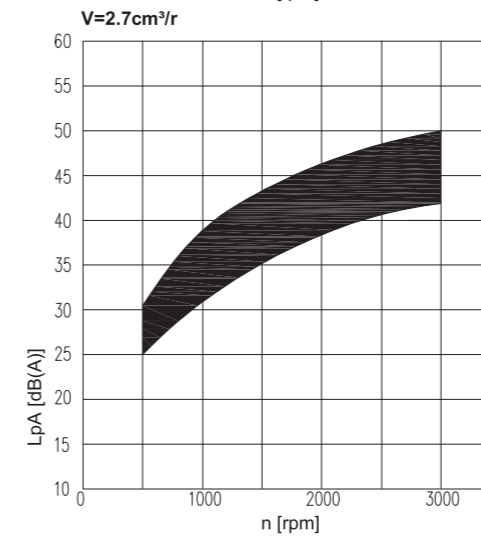
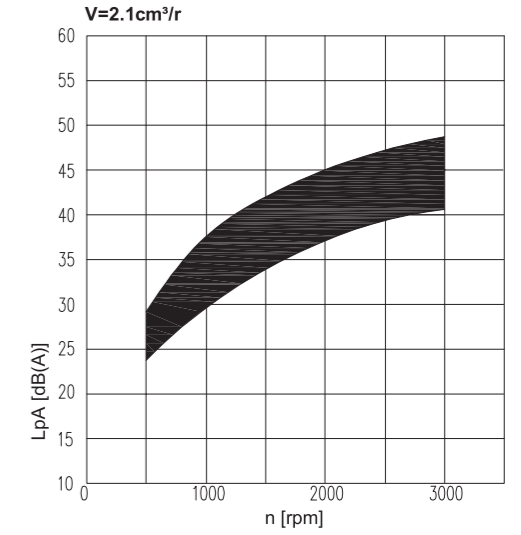
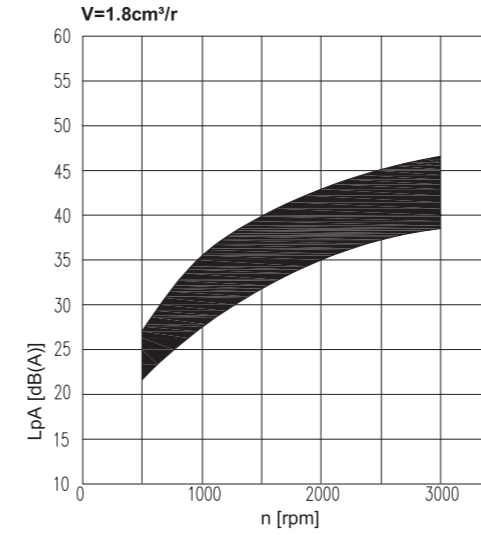
测量传感器与液压泵之间的距离: 1 米。

Distance between measuring sensor and hydraulic pump: 1m.



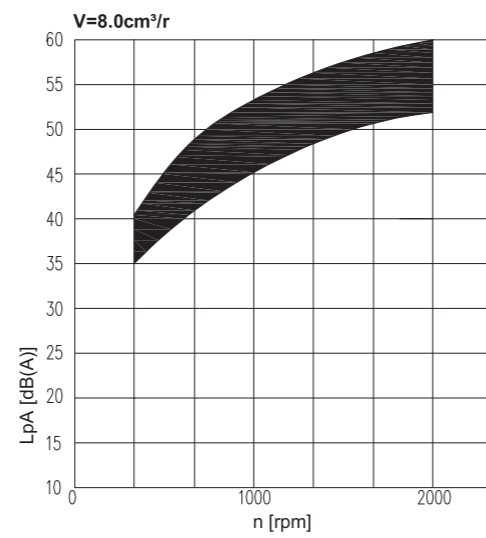
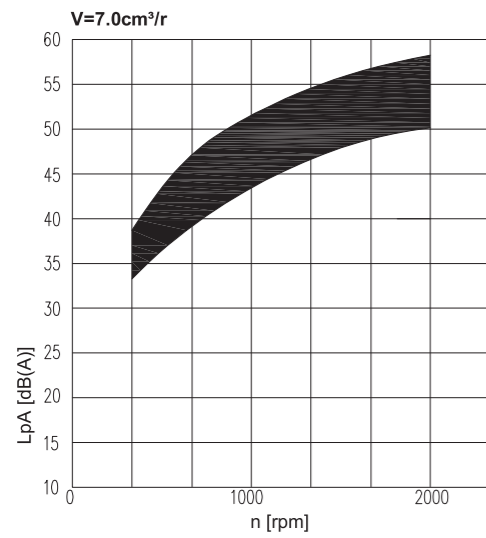
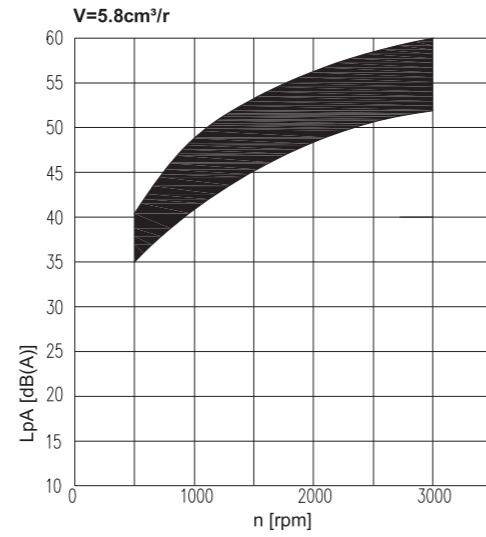
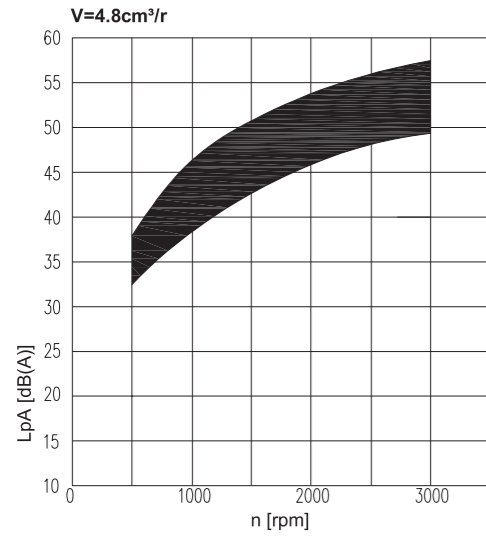
1系列/Group 1

1系列噪音曲线表/Group 1 Noise Curve Table



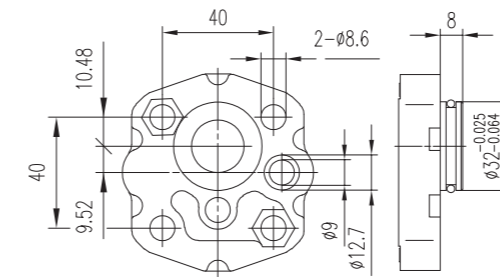
1系列/Group 1

1系列噪音曲线表/Group 1 Noise Curve Table

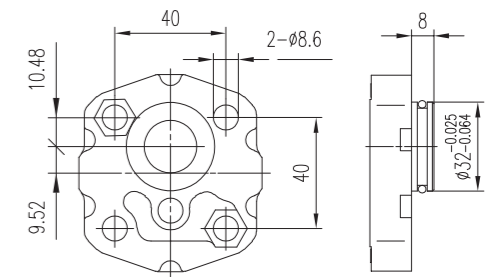


1系列/Group 1

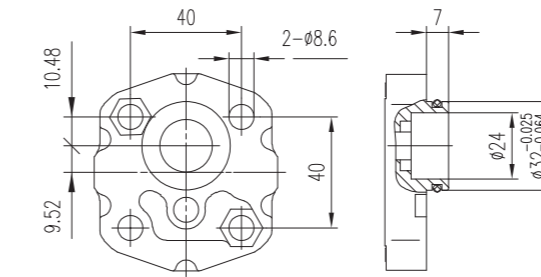
前盖/Front COVER



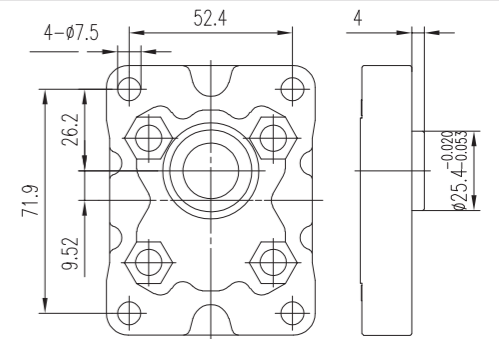
Q0



Q1

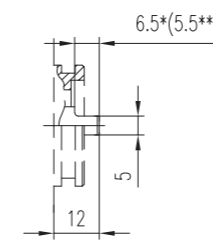


Q2



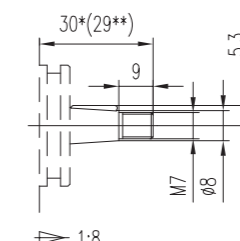
B0

轴伸/SHAFTS



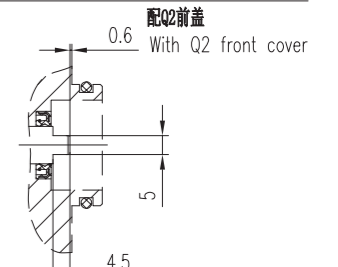
G0

最大扭矩
Max.Torque 20 Nm



T0

最大扭矩
Max.Torque 25 Nm



G1

最大扭矩
Max.Torque 20 Nm

- * 与前盖Q □ 配合尺寸
Dimension with front cover Q □
- ** 与前盖B □ 配合尺寸
Dimension with front cover B □