

**Sipariş Kodu / Ordering Code**

**KSWC02M50100NY**

Mil Tipi / Rod

Strok / Stroke (mm)

Çap / Bore Size (mm)

Manyetik / Magnet

Seri / Series

Model / Model

Model / Model Type

Ürün Model Kodu / Product Model Code

Seri / Series

0 - 05

M / Magnet

Manyetik / Magnet

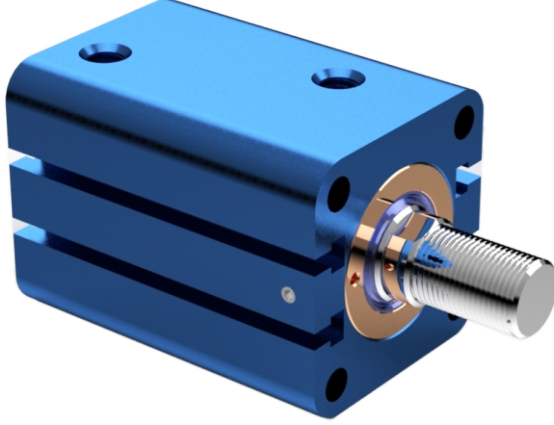
Çap / Bore (mm)

25 mm - 160 mm

Strok / Stroke (mm)

Mil Tipi / Rod Type

M : Erkek Mil / Male Rod F : Dişi Mil / Female Rod  
 N : Dönmez Mil / Non Rotate Rod Max.Str.: 100 mm  
 D : Çift Millî / Double Type Y : Yastıklı / With Cushion



Çap Bore (mm)	Ø Mil Rod (MM)	A1	BT	A2	Kk2	Kk1	C	D	E	LL	FB	FG	EE	Ll1	N	PL	RR	WF	Y	ZJ	Zj1
32	20	15	6,5	25	M16x1,5	M12x1,75	9	17	62	73	7	11	1/4	84	10	17	47	10	27	83	94
40	25	20	8,6	30	M20x1,5	M16x2	9	21	70	70	9	14	1/4	81	10	16	52	10	27	80	91
50	30	24	10,8	35	M24x1,5	M20x2,5	9	27	80	75	11	17,5	1/4	87	10	16	58	11	28	86	98
63	35	33	13	45	M30x1,5	M27x3	11	32	94	84	14	20	1/4	94	10	18	69	13	30	97	107
80	40	33	15,2	55	M36x1,5	M30x3,5	14	37	114	95	16	23	3/8	106	15	22	86	17	35	112	123
100	45	40	17,5	70	M48x1,5	M36x4	14	50	134	100	18	26	3/8	114	15	25	102	17	139	117	131

